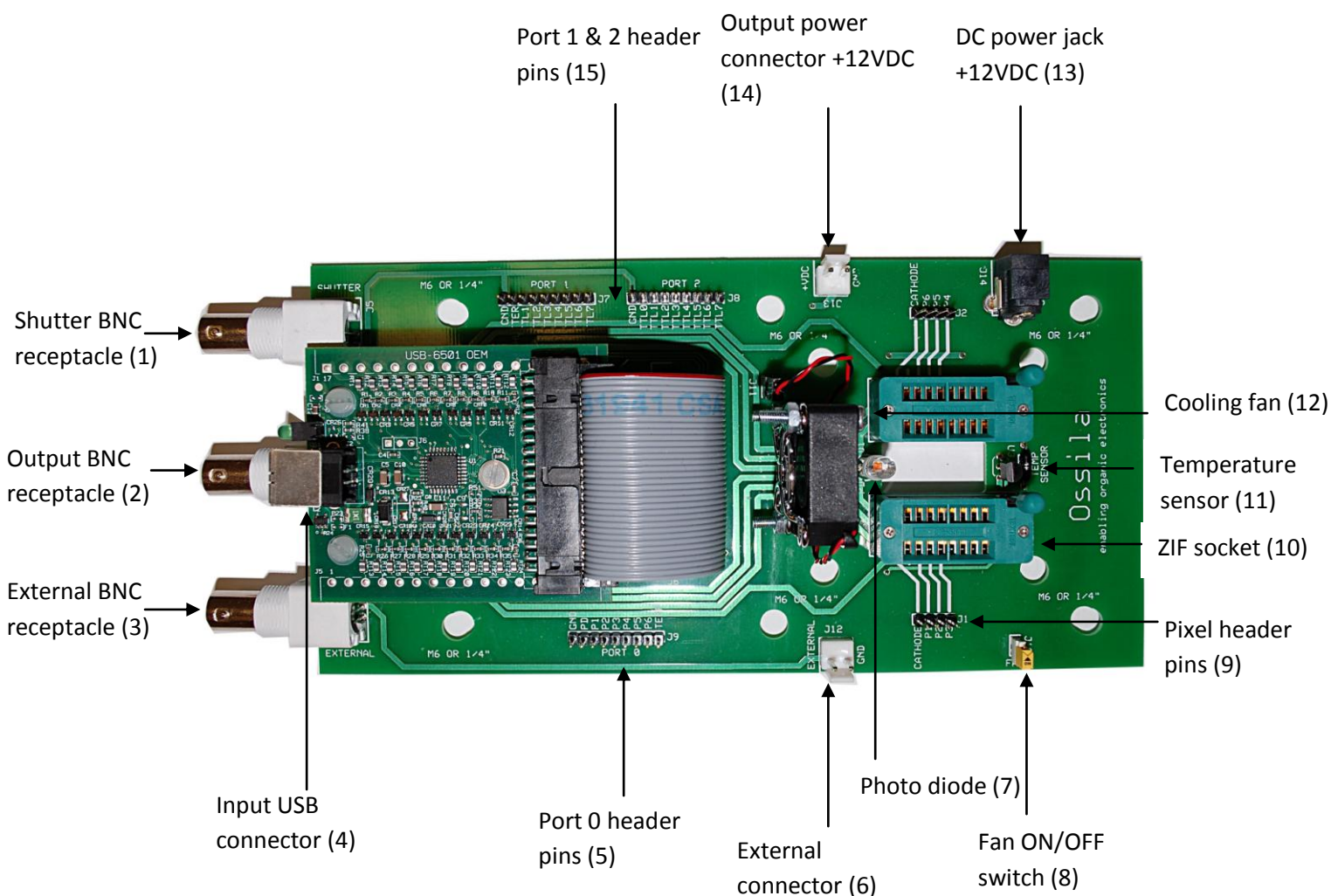


Ossila USB Testboard



The Ossila USB test board allows faster testing and measurement of OLEDs and OPVs to help make research and development faster and easier. It combines computer controlled electronic switching of the six individual pixels on a standard Ossila substrate alongside a reference thermometer and photodiode to allow a variety of measurements to be undertaken with increased speed and a greater degree of automation.

At the heart of the board is a network of ultra-high specification transistors that allow the individual pixels to be multiplexed onto a single BNC connector to attach to a variety of test equipment. The transistors are specified to have an extremely low on-state resistance ($<0.2\Omega$) and off state leakage ($<1\text{ nA}$). They are also capable of delivering high continuous currents of up to 800 mA DC and massive pulses of up to 20 amps meaning you are only limited by your devices and test equipment.

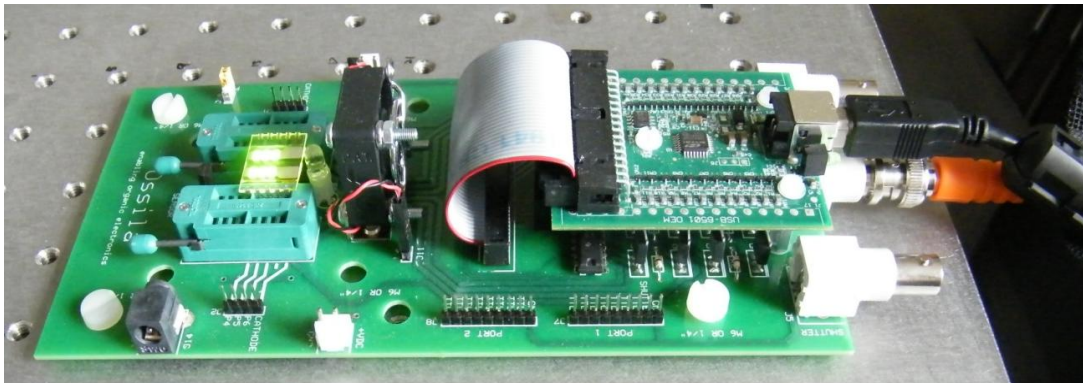
Computer control of the switching is provided by a National Instruments interface card with USB connection to make programming easy in a variety of programs such as LabVIEW and MATLAB.

Additional features include a cooling fan to keep substrate temperatures stable under high illumination and a shutter control for external systems. The versatility of the system makes it ideal for a wide variety of experiments including current-voltage (IV) and current-voltage/light (IVL) sweeps, external quantum efficiency measurements and lifetime testing.

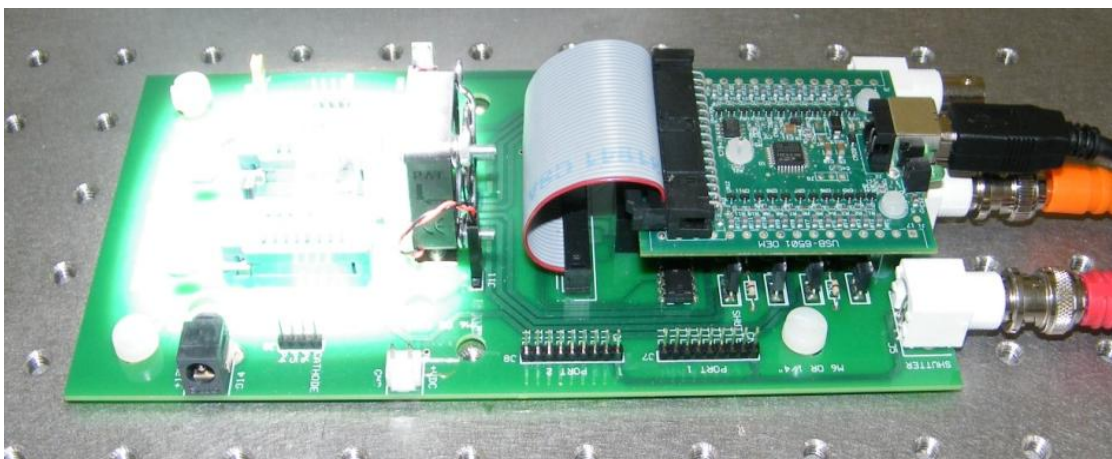
Features:

- Zero Insertion Force (ZIF) sockets for easy attachment and removal of devices
- High performance electronic pixels switches
- USB interface with easy integration to LabVIEW, MATLAB and others
- Compatible with Linux, Mac OS, Pocket PC and Windows
- On board temperature sensor
- On board reference photo-diode (optimised for visible response)
- Shutter control for external instruments
- Onboard cooling fan to keep substrate temperatures constant
- Optical window for experiments where optical access is required from both sides
- Additional access to 15 digital I/O lines for further data acquisition and control.
- M4, M6 and 1/4" mounting holes to make mounting on a variety of optical benches and other equipment quick and simple

Please note that LabVIEW® is a trademark of National Instruments and MATLAB® is a trademark of The Mathworks inc.



An OLED under test



An OPV under test illuminated by a solar simulator